

# Prince of Peace Lutheran Church

## Congregational Meeting

September 27, 2009



# Today's purpose and agenda

Congregation to vote on proposal to:

- Engage Donnelley Wagner Nelson Architects LLC to develop an architectural master plan for Prince of Peace that reflects the prioritized goals of the congregation at a cost of \$19,800.

Agenda:

- Council presentation
- Questions & Answers
- Vote by written ballot

# **Vision for the Ministry of Prince of Peace**

## **Our vision:**

- To connect, grow, and serve in Jesus' name**
- To further God's purpose for Prince of Peace in Princeton Junction and beyond**

# Our Process

## September 2008 – September 2009

- To discern God's plans for our church:
  - Brainstorming, surveys, and discussion to compile ministry "dreams" from the Congregation, Staff, Ministry teams, and Vision Task Force
  - Prioritized list of goals
  - Building Task Force has interviewed 4 architects, discerned that a master plan is the appropriate first step, and recommended we engage Donnelley Wagner Nelson to develop a master plan

**Today: Vote on recommendation to develop a master plan**

# **Our Process – Next Steps**

## **If recommendation is approved:**

- Funding will be drawn from PoP available cash
  - To be repaid to the church by voluntary contributions and/or future operating budget allocations
- Architect will develop master plan (5-6 months)
- Congregation will review and discuss plan
- Congregation will vote on whether to initiate a capital campaign to raise funds for Phase 1 of master plan
  - Vote to occur approximately September 2010

# What is a master plan?

- A physical analysis and plan, drawn by an architect, based on our priorities, that will lay out the space options for future development

# Why do we need a Master Plan?

- A master plan allows incremental improvements to be done in a coordinated way that reduces the likelihood of wasteful spending.
  - For example, without a master plan we might expand the driveway and in a few years time realize we have to move it to add extra classroom space.
- A master plan will act as a guide if/when we decide to act on the prioritized mission goals we received from the congregation, ensuring that any development will be done in a thoughtful and efficient manner
- Future ministry and growth potential is closely linked to the amount and condition of our physical space
- We are stewards of the church's physical assets and must optimize our existing landlocked spaced to plan for the future responsibly

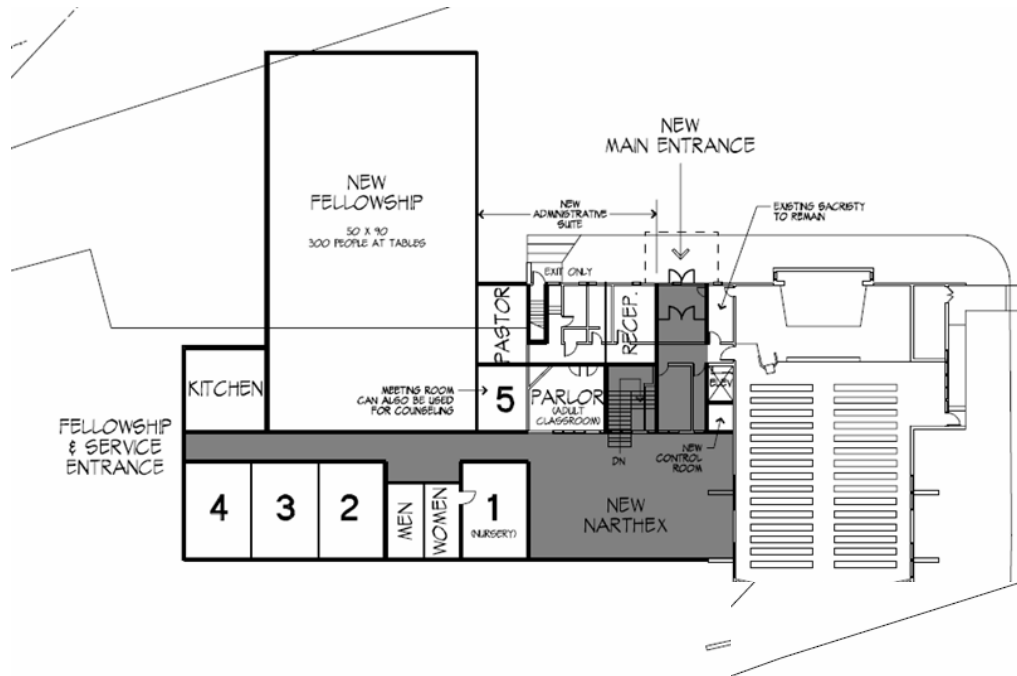
# Prince of Peace Master Plan

## In Scope - Potential Areas for Improvement

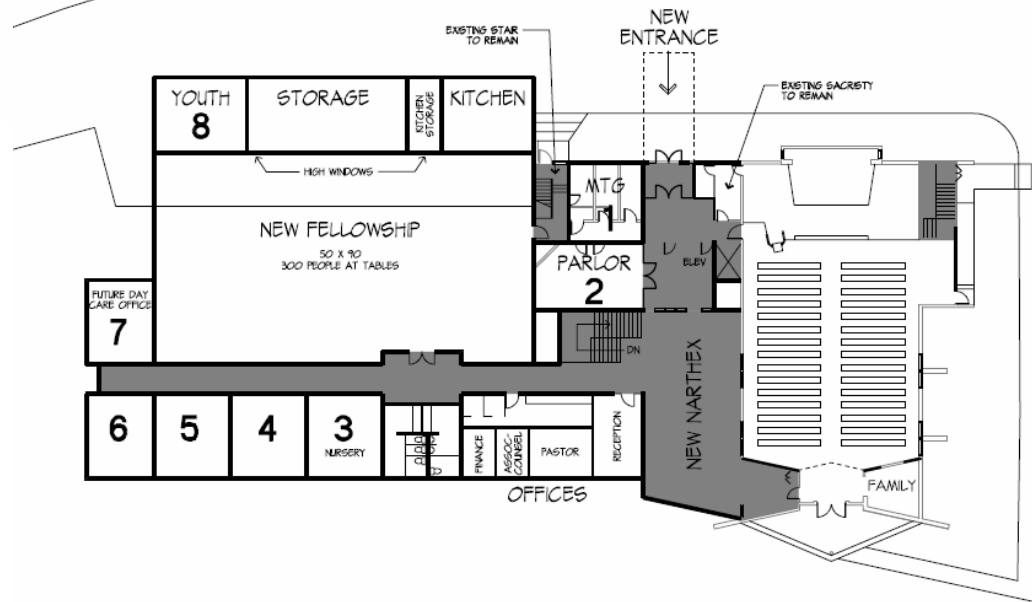
- Parking
- Church House
- Additional space for offices and small group gathering/classes
- Narthex for improved fellowship space

## Not in Scope

- Sanctuary



Multiple options  
will be developed  
(these are examples; not  
our church)

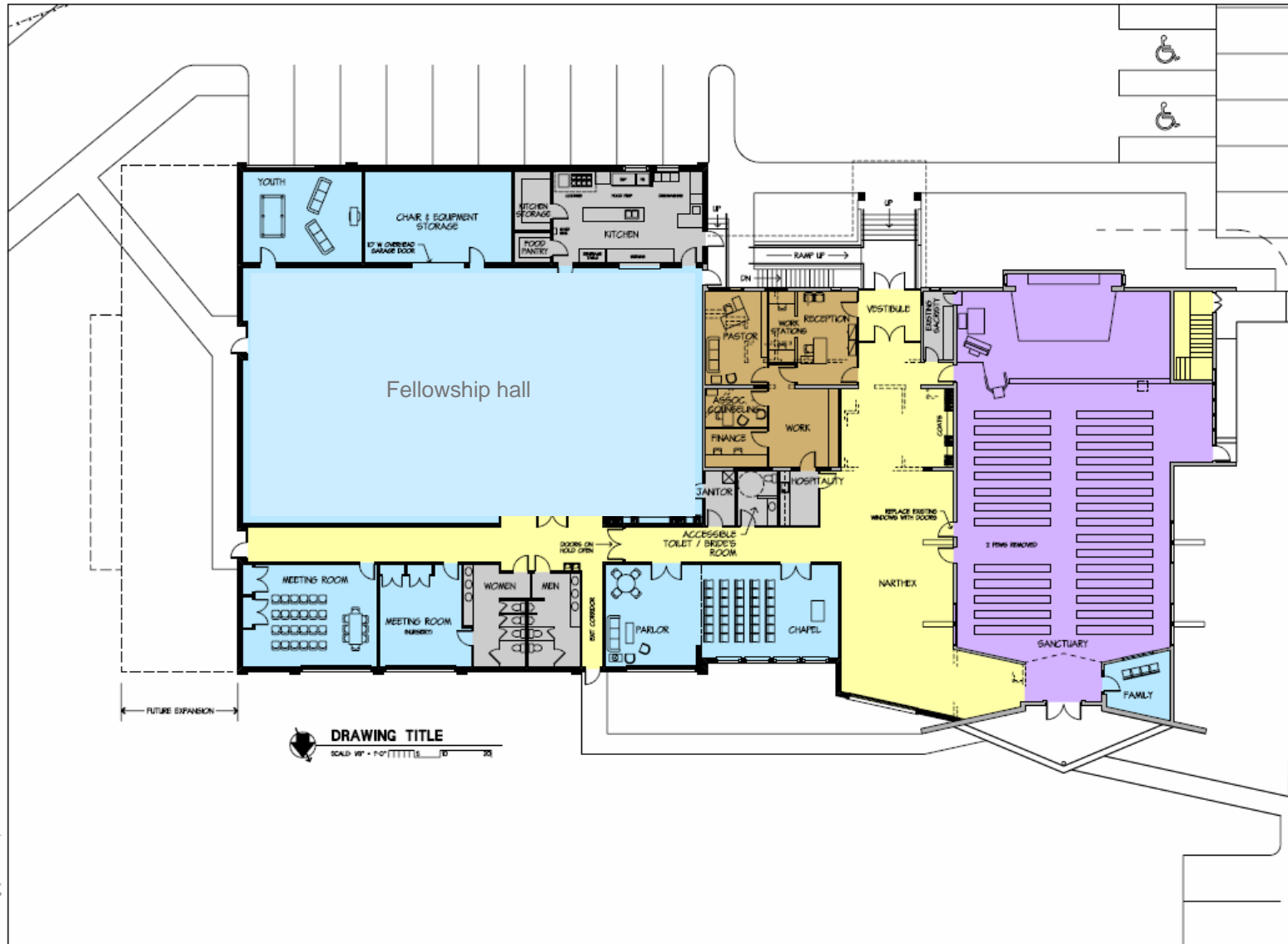


# 3D rendering

(This is an example; not our church)

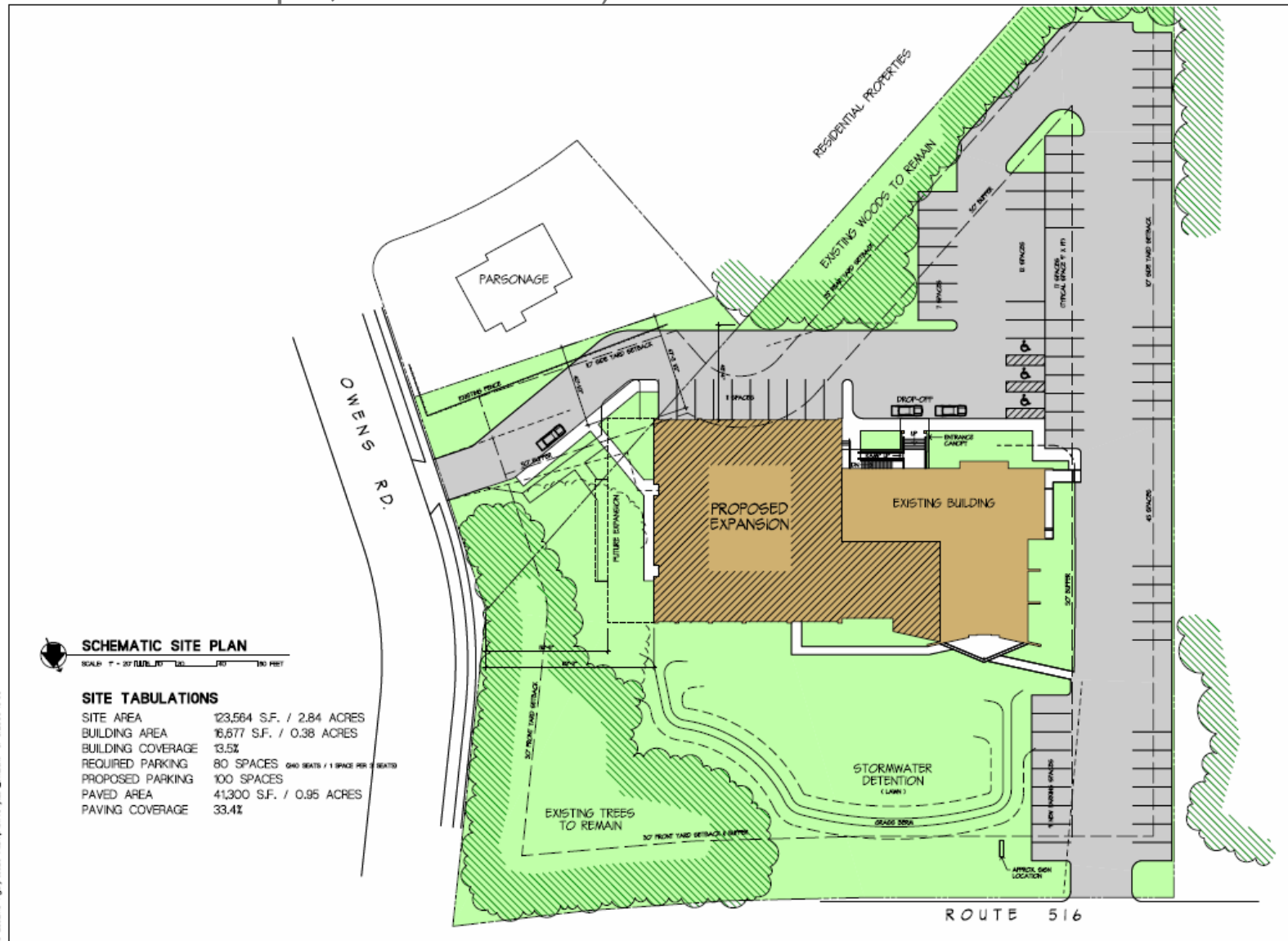


# Detailed architectural drawing with potential phasing (This is an example; not our church)



# Building plan set in the context of the church property

(This is an example; not our church)



# Prioritized Goals

- All dreams/surveys will be shared with architect
- Below are the results of recent congregation survey

| Improvement Areas          | # 1 <sup>st</sup> place | # 2 <sup>nd</sup> place | # 3 <sup>rd</sup> place | Comments  |
|----------------------------|-------------------------|-------------------------|-------------------------|---|
| Expand Parking             | 34                      | 9                       | 7                       | -Space for future growth -<br>1 parking place yields 2.1 worshippers  |
| Improve Inside space       | 9                       | 15                      | 8                       | -Church House is used for SS overflow; needs maintenance<br>-- Current limited office space discourages adding part-time positions (paid or volunteer).             |
| Additional Staff           | 7                       | 10                      | 17                      |   |
| Redesign front of building | 1                       | 9                       | 7                       | - Improved visibility and presentation to create greater awareness of church's presence<br>-- Signage   |
| Other                      |                         |                         |                         | - Examples: pay off mortgage (3); bookkeeper/accountant (4); more support for outreach (5); space suggestions (4); 4-6 grade youth group (1); staff suggestions (3) |

# Questions & Answers

# Congregation Vote

- Engage Donnelley Wagner Nelson Architects LLC to develop an architectural master plan for Prince of Peace that reflects the prioritized goals of the congregation at a cost of \$19,800.
- This master plan will provide us with the information necessary for the congregation to decide whether we want to initiate a capital campaign:
  - Space options
  - Estimated costs
  - Potential phases of work